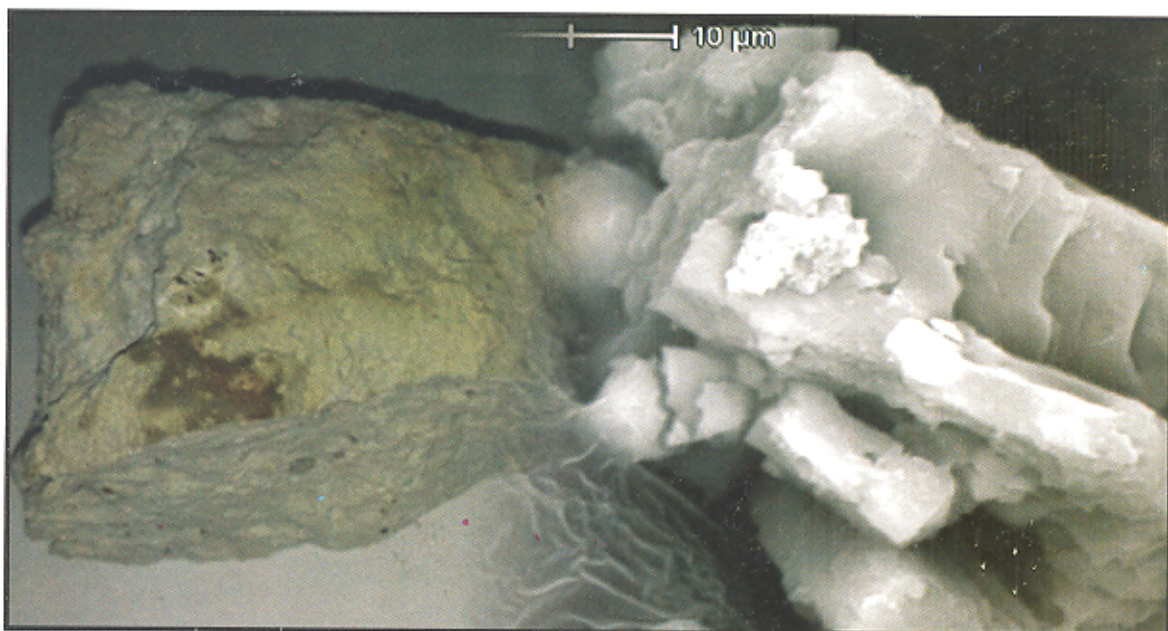


INDONESIAN MINING JOURNAL

Volume 16 Number 2, June 2013

ISSN 0854-9931



R & D CENTRE for MINERAL and COAL TECHNOLOGY

Journal IMJ	Vol. 16	No. 2	Pages 71 - 119	Bandung June 2013	ISSN 0854-9931	Accredited as a scientific journal Accreditation no. 465/AU2/P2MI-LIPI/08/2012 Valid until August 2015
----------------	---------	-------	----------------	----------------------	----------------	--

INDONESIAN MINING JOURNAL

Volume 16 Number 2, June 2013

ISSN 0854-9931

Accreditation No : 465/AU2/P2MI-LIPI/08/2012

- ❖ Coal Geochemistry of the Unconventional Muarenim Coalbed Reservoir, South Sumatera Basin: A Case Study of the Rambutan Field
Geokimia Reservoir Non-Konvensional Batubara Muaraenim, Cekungan Sumatera Selatan: Studi Kasus dari Lapangan Rambutan
Imam B. Sosrowidjojo 71 - 81
- ❖ Study of Compressional and Shear Wave Velocity Tests in the Laboratory and Field Applied to Sedimentary Rocks of Rantau Nangka District, South Kalimantan
Studi Pengukuran Kecepatan Rambat Gelombang dan Geser di Laboratorium dan Lapangan pada Batuan Sedimen Daerah Rantau Nangka, Kalimantan Selatan
Zulfahmi 82 - 92
- ❖ Reduction of Goethitic Iron Ore Using Thermogravimetric Method
Reduksi Bijih Besi Gutit dengan Menggunakan Termogravimetri
Adji Kawigraha, Sri Harjanto, Johny W. Soedarsono and Pramusanto 93 - 100
- ❖ A Literature Study of Benefiting K-Bearing Silicate Rocks as Raw Materials for Potassium Fertilizer
Studi Literatur Pemanfaatan Batuan Silikat Pembawa Kalium Sebagai Bahan Pupuk Kalium
Agus Wahyudi and Tatang Wahyudi 101 - 110
- ❖ Impact of Corporate Social Responsibility (CSR) in Indonesia: A Case Study of General Mining Industries
Dampak Tanggung Jawab Sosial Perusahaan (CSR) di Indonesia Studi Kasus Industri Pertambangan Umum
Ukar W. Soelistijo 111 - 119