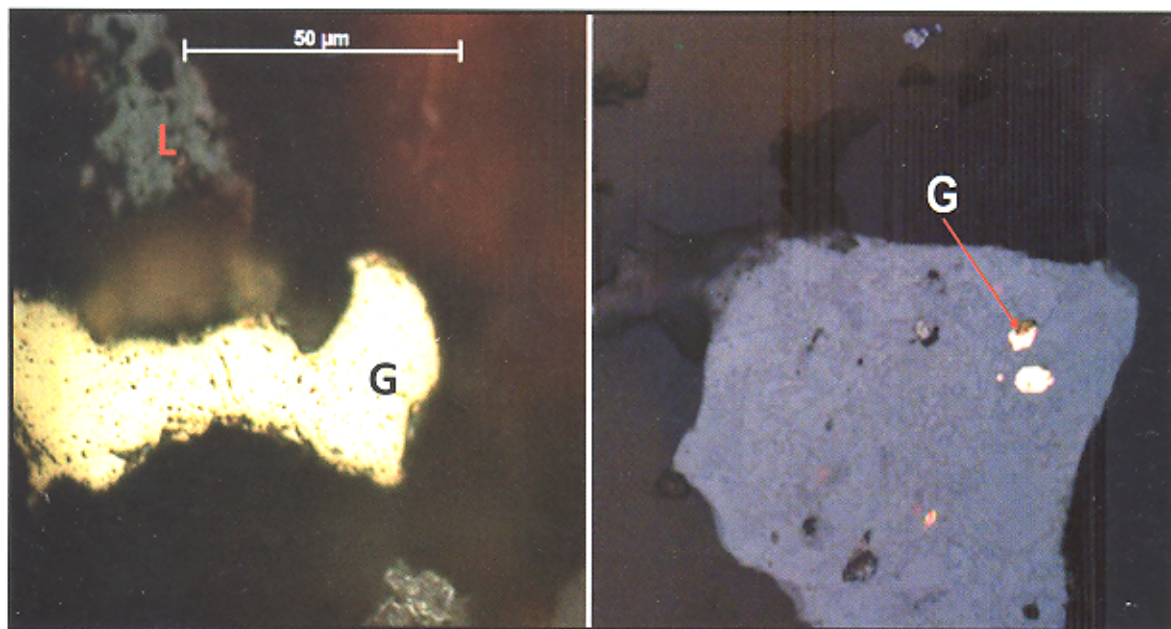


INDONESIAN MINING JOURNAL

Volume 16 Number 1, February 2013

ISSN 0854-9931



R & D CENTRE for MINERAL and COAL TECHNOLOGY

Journal IMJ	Vol. 16	No. 1	Pages 1 - 70	Bandung February 2013	ISSN 0854-9931	Accredited as a scientific journal Accreditation no. 465/AU2/P2MI-LIPI/08/2012 Valid until August 2015
----------------	---------	-------	--------------	--------------------------	----------------	--

INDONESIAN MINING JOURNAL

Volume 16 Number 1, February 2013

ISSN 0854-9931

Accreditation No : 465/AU2/P2MI-LIPI/08/2012

- ❖ The Economic Evaluation of Research-Based Indonesian Coal Utilization
Evaluasi Ekonomi Pemanfaatan Batubara Indonesia Berdasarkan Hasil Penelitian
Ukar W. Soelistijo and Suganal 1 - 17

- ❖ Analysis of Regency Readiness Level in Implementating Autonomy of Mineral Resources Management in West Papua Province
Analisis Tingkat Kesiapan Kabupaten Dalam Mengimplementasikan Otonomy Pengelolaan Sumber Daya Mineral di Provinsi Papua Barat
Juanita R. Horman and Aryo P. Wibowo 18 - 36

- ❖ Study on Ashes of Blended Coal-Biomass for Co-Firing System in a Coal Fired Boiler
Studi Abu dari Campuran Batubara Biomassa untuk Sistem Pembakaran Bersama pada Boiler Batubara
Ikin Sodikin and Datin F. Umar 37 - 48

- ❖ Processing of the Gold Ore from Kedondong Area, South Lampung Using Gravity Concentration Method
Pengolahan Bijih Emas Kedondong, Lampung Selatan dengan Metode Konsentrasi Gaya Berat
Lili Tahli and Tatang Wahyudi 49 - 62

- ❖ Tin-Based Alloy for Fuel Catalyst
Logam Paduan Berbasis Timah Sebagai Katalis Bahan Bakar
Siti Rochani, Pramusanto and Retno Damayanti 63 - 70