

[www.zkg.de](http://www.zkg.de)

Cement Lime Gypsum  
Zement Kalk Gips

ISSUE 7-8  
2014

PROCESS // Waste heat

Use of the CP g-cooler in  
waste heat recovery systems

40

**ZKG**  
INTERNATIONAL

**PLANT REPORT // Renaturation**

Wondrous return 2

**MARKETS AND TRENDS // Russia**

Current state and development perspectives 2

**PROCESS // Modernization**

Lafarge's Iligan preheater debottlenecking project 3

**SPECIAL // AFR**

From Municipal Solid Waste to energy 5

// Co-processing

Co-processing trial run with pre-processed MSW fractions 6

**SPOTLIGHT**  
06 // News

**PRODUCTS**  
// Quarrying

12 **Tyre protection in the limelight**  
Caterpillar/Erlau  
// Conveying

14 **Quality from experience**  
HEKO Ketten GmbH

16 **Safety solutions for conveyor applications**  
Safety solutions for conveyor applications

**Events**  
// Nanocem

18 **Ten years of success and a bright future**  
Nanocem Open Meeting, 08.04.2014, Lausanne/Switzerland  
// IEEE/PCA

20 **Family reunion during cherry blossom in Washington, DC**  
56<sup>th</sup> IEEE-IAS/PCA Cement Conference 2014  
// IFAT

21 **IFAT more successful than ever before**  
IFAT 2014  
// Donation

22 **Cement for the protection of nature and wildlife**  
Ohorongo Cement

**PLANT REPORT**  
// Renaturation

24 **Wondrous return**  
HeidelbergCement AG

**MARKETS AND TRENDS**  
// Russia

26 **Russian cement market:  
current state and development perspectives**  
Eduard L. Bolshakov, Cand. Eng. Sc., Chairman of the Committee on Cement, Concrete, Dry mixtures of the Russian Union of Builders, President of "ALIT" Group of Companies, St. Petersburg/Russia

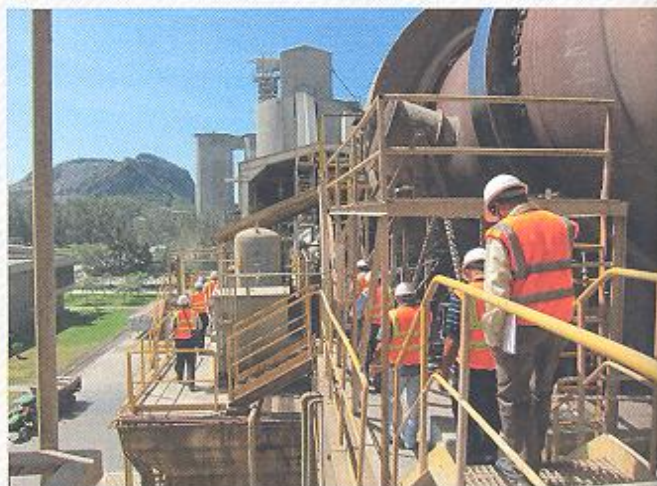
**PROCESS**  
// Plant optimization

30 **The industrial practice of fuel and power saving at JSC Iskitimtsement**  
V.Y. Manuylov, Cand. Eng. Sc., Technical Director, JSC Iskitimtsement, Iskitim/Russia



// Page 30

The industrial practice of fuel and power saving at JSC Iskitimtsement



// Page 54

Destruction of hazardous chemicals and POPs in cement kilns



// Page 60

Co-processing trial run with pre-processed Municipal Solid Waste fractions

Official Journal

Federal German Association of the Lime Industry  
 Bundesverband der Deutschen Kalkindustrie e.V.  
 Federal German Association of the Gypsum Industry  
 Bundesverband der Gipsindustrie e.V.

PROCESS

// Modernization

- 36 **Lafarge's Iligan preheater debottlenecking project**  
 Liu Yongchang, Nanjing Kisen/China, Eric Zarrouati,  
 Lafarge Philippine/Philippines

// Waste heat

- 40 **Use of the CP g-cooler in waste heat recovery systems**  
 Prof. Dipl.-Ing. P. Hilgraf, M.Sc. Ch. Schuster,  
 Claudius Peters Projects GmbH, Buxtehude/Germany

SPECIAL

// AFR

- 50 **From Municipal Solid Waste to energy**  
 Dr. Sandro Buzzi, Buzzi Unicem SpA, Casale Monferrato/Italy
- 54 **Destruction of hazardous chemicals and POPs  
 in cement kilns**  
 Dr. Kåre Helge Karstensen, Chief Scientist, Foundation for Scientific  
 and Industrial Research – SINTEF, Oslo/Norway
- 60 **Co-processing trial run with pre-processed Municipal  
 Solid Waste fractions**  
 Vaishali Nandan<sup>1</sup>, Dieter Mutz<sup>1</sup>, Regina Dube<sup>1</sup>, Jitendra Yadav<sup>1</sup>,  
 Ramesh Pawar<sup>2</sup>, Ulhas Parlikar<sup>3</sup>  
<sup>1</sup> Deutsche Gesellschaft für Internationale Zusammenarbeit (GIZ)  
 GmbH, New Delhi/India  
<sup>2</sup> Nashik Municipal Corporation, Nashik, Maharashtra/India  
<sup>3</sup> Geocycle (Associated Cement Companies & Ambuja Cement Ltd.),  
 India

- 72 **IMPRINT**  
 72 **EVENT PREVIEW**  
 72 **ADVERTISER INDEX**

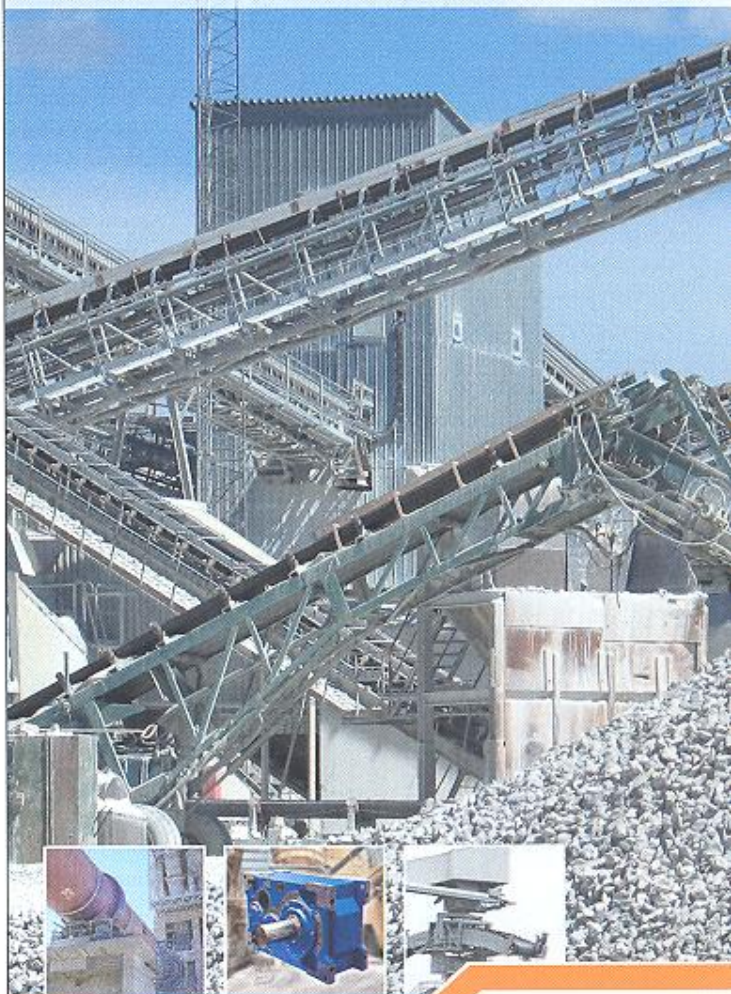


Pinpointed blasting in a quarry  
 at the Hellwegbörde/Germany  
 Source: Robert Mehl, Aachen/  
 Germany

NORD DRIVESYSTEMS  
 Intelligent Drivesystems, Worldwide Services

# Who keeps the cement industry moving?

Whether for conveyors, mills, rotary kilns, silos –  
 NORD DRIVESYSTEMS has the right drive solution.



NORD DRIVESYSTEMS supplies drive units to the cement  
 industry, which are both energy-efficient and robust enough  
 to withstand this harsh industrial environment.



Find out more under: <http://cement.nord.com>

Getriebebau NORD  
 22941 Bargteheide  
 Getriebebau-Nord-Str. 1  
 Fon: +49 (0) 45 32 / 289-0  
 Fax: +49 (0) 45 32 / 289-22 53  
 info@nord.com, [www.nord.com](http://www.nord.com)

Member of the  
 NORD DRIVESYSTEMS GROUP

