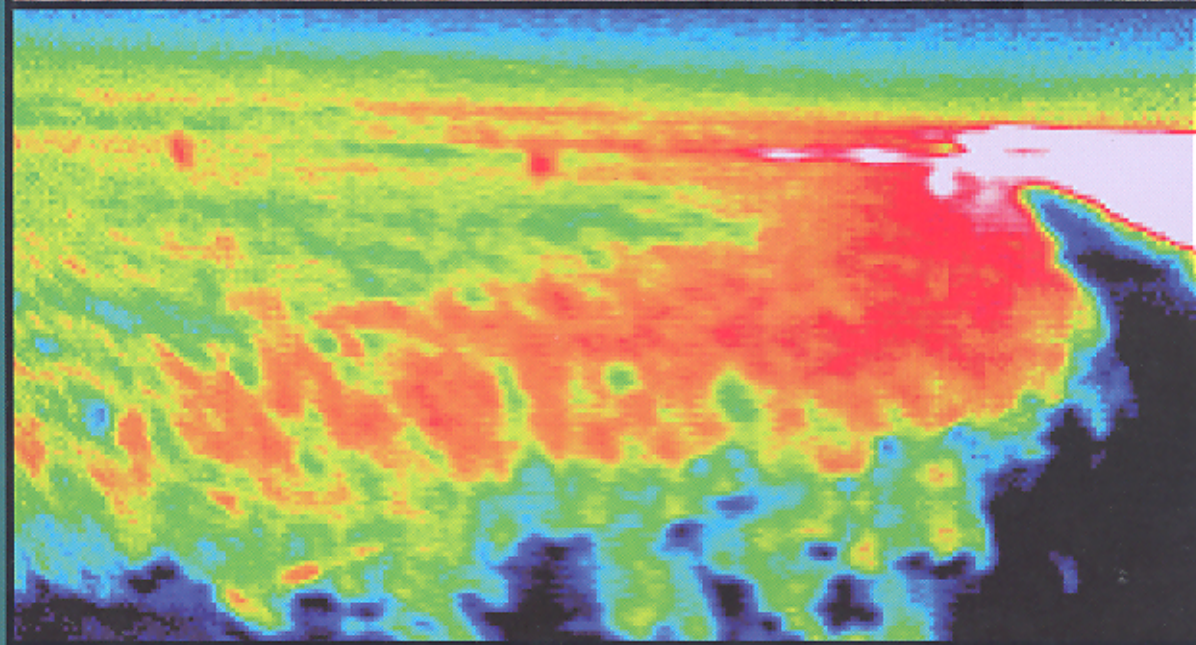


*Plant
Production
Science*

PPS

Vol. 17 No. 3 July 2014



ISSN 1343-943X
Published by
the Crop Science Society of Japan



PLANT PRODUCTION SCIENCE

Vol. 17 No. 3 July 2014

Crop Physiology

- 209 Influence of Nitrogen Enrichment during Reproductive Growth Stage on Leaf Nitrogen Accumulation and Seed Yield in Soybean X. Zhao, S.H. Zheng and S. Arima
- 218 Field Technique and Traits to Assess Reproductive Stage Cold Tolerance in Sorghum (*Sorghum bicolor* (L.) Moench) L. Krishnamurthy, E. Dinakaran, A.A. Kumar and B.V.S. Reddy

Genetic Resources Evaluation

- 228 Variation in Root Development Response to Flooding among 92 Soybean Lines during Early Growth Stages S. Sakazono, T. Nagata, R. Matsuo, S. Kajihara, M. Watanabe, M. Ishimoto, S. Shimamura, K. Harada, R. Takahashi and T. Mochizuki

Agronomy & Crop Ecology

- 237 Nitrogen Uptake by the Rice Plant and Changes in the Soil Chemical Properties in the Paddy Rice Field during Yearly Application of Anaerobically-Digested Manure for Seven Years T. Nishikawa, K. Li and T. Inamura
- 245 Lower-Than-Expected Floret Sterility of Rice under Extremely Hot Conditions in a Flood-Irrigated Field in New South Wales, Australia T. Matsui, K. Kobayasi, H. Nakagawa, M. Yoshimoto, T. Hasegawa, R. Reinke and J. Angus
- 253 Fatty Acid Content of Seed at Different Development Stages in Canola on Different Soil Types with Low Organic Matter F. Onemli
- 260 Effect of Winter Crop Species on Arbuscular Mycorrhizal Fungal Colonization and Subsequent Soybean Yields K. Isobe, M. Higo, T. Kondo, N. Sato, S. Takeyama and Y. Torigoe
- 268 Maintenance of Crop Growth through 30 Days after Silking Contributes to Achieving Super-High Yield of Spring Maize H. Tao, P. Chen, L. Li, S. Liao, L. Wang and P. Wang
- 276 Assessment of Damage Caused by Two-Striped Leaf Beetle (*Medythia nigrobilineata* Motschulsky) Larval Feeding of Root Nodules in Soybean and Its Control during Furrow Cultivation at Seeding Time M. Takei, M. Nakamura, Y. Hamada, A. Ikeda, S. Mitsuya, R.R. Suralta and A. Yamauchi

284 Contents of Japanese Journal of Crop Science, Vol. 83, No. 3

- (i) Instructions for Contributors
- (vii) Subscription to Plant Production Science
- (viii) Erratum