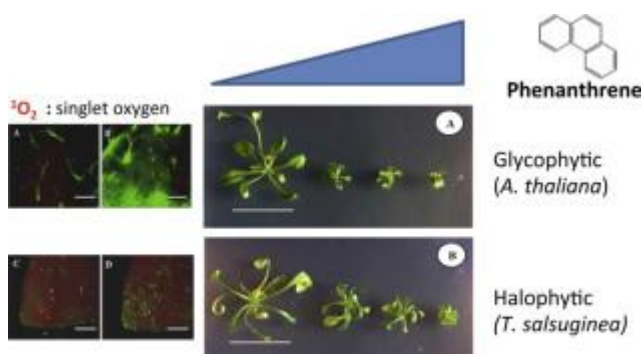


Topic alert:
Agricultural and biological sciences: Horticulture
20 New articles available on ScienceDirect

1. [Plants belonging to the genus *Thymus* as antibacterial agents: From farm to pharmacy](#) Review Article
Food Chemistry, Volume 173, 15 April 2015, Pages 339-347
Seyed Mohammad Nabavi, Anna Marchese, Morteza Izadi, Valeria Curti, Maria Daglia, Seyed Fazel Nabavi
2. [Effect of solution pH on the dynamic of biosorption of Cr\(VI\) by living plants of *Salvinia minima*](#) Original Research Article
Ecological Engineering, Volume 74, January 2015, Pages 33-41
Silvana Chocobar Ponce, Carolina Prado, Eduardo Pagano, Fernando E. Prado, Mariana Rosa
3. [Effects of organic and inorganic amendments on bio-accumulation and partitioning of Cd in *Brassica juncea* and *Ricinus communis*](#) Original Research Article
Ecological Engineering, Volume 74, January 2015, Pages 93-100
Kuldeep Baudhh, Rana Pratap Singh
4. [The halophytic model plant *Thellungiella salsuginea* exhibited increased tolerance to phenanthrene-induced stress in comparison with the glycophytic one *Arabidopsis thaliana*: Application for phytoremediation](#) Original Research Article
Ecological Engineering, Volume 74, January 2015, Pages 125-134
Moez Shiri, Mokded Rabhi, Chedly Abdelly, Abdelhak El Amrani

Graphical abstract



Phytoremediation of PAHs by halophytic plants

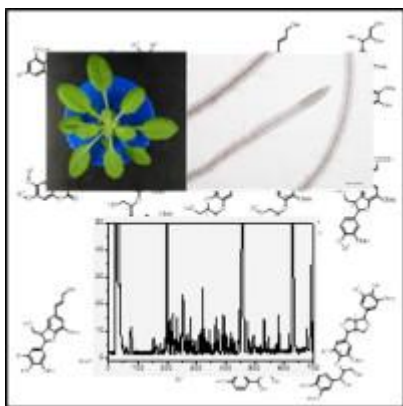
5. [Interactions between the invasive European green crab, *Carcinus maenas* \(L.\), and juveniles of the soft-shell clam, *Mya arenaria* L., in eastern Maine, USA](#) Original Research Article
Journal of Experimental Marine Biology and Ecology, Volume 462, January 2015, Pages 62-73
Eric Bryan P. Tan, Brian F. Beal
6. [Constructing landscapes of value: Capitalist investment for the acquisition of marginal or unused land—The case of Tanzania](#) Original Research Article
Land Use Policy, Volume 42, January 2015, Pages 652-663
Andreas Exner, Lara E. Bartels, Markus Windhaber, Steffen Fritz, Linda See,

Emilio Politti, Stephan Hochleithner

7. [The effect of screen type on crop micro-climate, reference evapotranspiration and yield of a greenhouse banana plantation](#) Original Research Article
Scientia Horticulturae, Volume 180, 17 December 2014, Pages 32-39
Moran Pirkner, Josef Tanny, Or Shapira, Meir Teitel, Shabtai Cohen, Yosepha Shahak, Yair Israeli
8. [Mycorrhizal inoculation affected growth, mineral composition, proteins and sugars in lettuces biofortified with organic or inorganic selenocompounds](#) Original Research Article
Scientia Horticulturae, Volume 180, 17 December 2014, Pages 40-51
Carmen Sanmartín, Idoia Garmendia, Beatriz Romano, Marta Díaz, Juan Antonio Palop, Nieves Goicoechea
9. [mRNA Transcript abundance during plant growth and the influence of Li⁺ exposure](#) Original Research Article
Plant Science, Volume 229, December 2014, Pages 262-279
M.C. Duff, W.W. Kuhne, N.V. Halverson, C.-S. Chang, E. Kitamura, L. Hawthorn, N.E. Martinez, C. Stafford, C.E. Milliken, E.F. Caldwell, E. Stieve-Caldwell
10. [Waterlogging-induced increase in fermentation and related gene expression in the root of cucumber \(*Cucumis sativus* L.\)](#) Original Research Article
Scientia Horticulturae, Volume 179, 24 November 2014, Pages 388-395
Xu Xuewen, Wang Huihui, Qi Xiaohua, Xu Qiang, Chen Xuehao
11. [Atmospheric application of trace amounts of nitric oxide enhances tolerance to salt stress and improves nutritional quality in spinach \(*Spinacia oleracea* L.\)](#) Original Research Article
Food Chemistry, Available online 29 October 2014, Pages
Shao-Ting Du, Yue Liu, Peng Zhang, Hui-Jun Liu, Xue-Qing Zhang, Ran-Ran Zhang
12. [Total nutritional capacity and inflammation inhibition effect of *Acalypha alnifolia* Klein ex wild.—An unexplored wild leafy vegetable](#) Original Research Article
Journal of Food and Drug Analysis, Available online 29 October 2014, Pages
Revathi Ponnusamy, Parimelazhagan Thangaraj
13. [Profiling of secondary metabolites in root exudates of *Arabidopsis thaliana*](#) Original Research Article
Phytochemistry, Available online 29 October 2014, Pages
Nadine Strehmel, Christoph Böttcher, Stephan Schmidt, Dierk Scheel

Graphical abstract

Root exudates obtained from hydroponically cultivated *Arabidopsis thaliana* were analyzed by non-targeted metabolite profiling using UPLC/ESI-QTOFMS. A total of 103 compounds were detected, of which more than 90 were structurally characterized and classified.



14. [Long-term yield effects of establishment method and weed control in willow for short rotation coppice \(SRC\)](#) Original Research Article
Biomass and Bioenergy, Available online 26 October 2014, Pages
 Søren Ugilt Larsen, Uffe Jørgensen, Jens Bonderup Kjeldsen, Poul Erik Lærke
15. [Physiochemical characterization of four cherry species \(*Prunus spp.*\) grown in China](#) Original Research Article
Food Chemistry, Available online 25 October 2014, Pages
 Jinping Cao, Qing Jiang, Juanying Lin, Xian Li, Chongde Sun, Kunsong Chen
16. [Using a toxicity test with *Ruppia maritima* \(Linnaeus\) to assess the effects of Roundup](#) Original Research Article
Marine Pollution Bulletin, Available online 25 October 2014, Pages
 Aline de Jesus Veloso Castro, Ioni Gonçalves Colares, Teresa Cristina Rodrigues dos Santos Franco, Marco Valerio Jansen Cutrim, Ricardo Luvizotto-Santos
17. [The potentials and challenges of algae based biofuels: A review of the techno-economic, life cycle, and resource assessment modeling](#) Original Research Article
Bioresource Technology, Available online 24 October 2014, Pages
 Jason C. Quinn, Ryan Davis
18. [Using an *Arabidopsis* oligonucleotide microarray to analyze the secretory pathway genes' Response to TuMV infection in *Brassica rapa*](#) Original Research Article
Physiological and Molecular Plant Pathology, Available online 23 October 2014, Pages
 Yanxiao Li, Changwei Zhang, Xiaoming Song, Shanwu Lv, Xilin Hou
19. [The effects of LED illumination spectra and intensity on carotenoid content in *Brassicaceae* microgreens](#) Original Research Article
Food Chemistry, Available online 22 October 2014, Pages
 Aušra Brazaitytė, Sandra Sakalauskienė, Giedrė Samuolienė, Julė Jankauskienė, Akvilė Viršilė, Algirdas Novičkovas, Ramūnas Sirtautas, Jurga Miliauskienė, Viktorija Vaštakaitė, Laurynas Dabašinskas, Pavelas Duchovskis
20. [Bacterial community shifts associated with high abundance of *Rhizobium spp.* in potato roots under macronutrient-deficient conditions](#)
Soil Biology and Biochemistry, Available online 22 October 2014, Pages
 Yusuke Unno, Takuro Shinano, Kiwamu Minamisawa, Seishi Ikeda