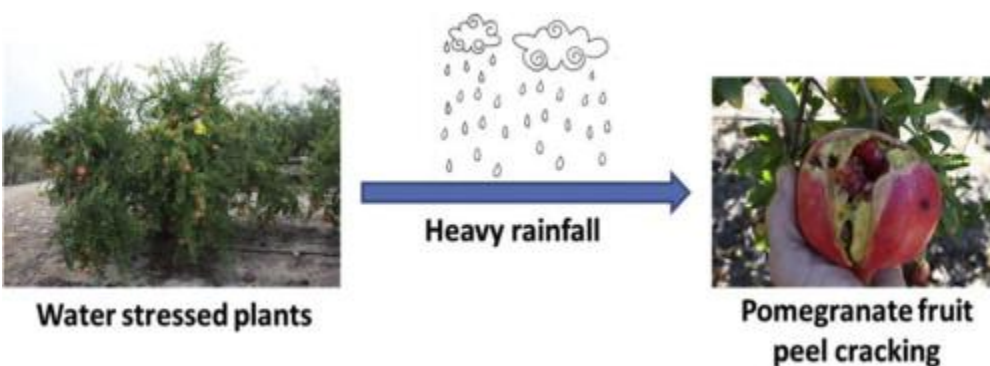


**Horticulture (Alert)**  
**Agricultural and biological sciences**  
**Modify or Remove My Alerts**  
**(13 Judul)**

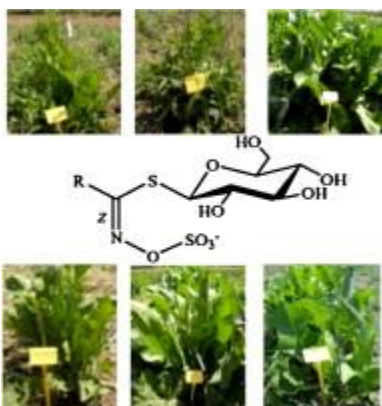
1. Rainfall intensifies fruit peel cracking in water stressed pomegranate trees Original Research Article  
*Agricultural and Forest Meteorology, Volume 194, 15 August 2014, Pages 29-35*  
A. Galindo, P. Rodríguez, J. Collado-González, Z.N. Cruz, E. Torrecillas, S. Ondoño, M. Corell, A. Moriana, A. Torrecillas

Graphical abstract



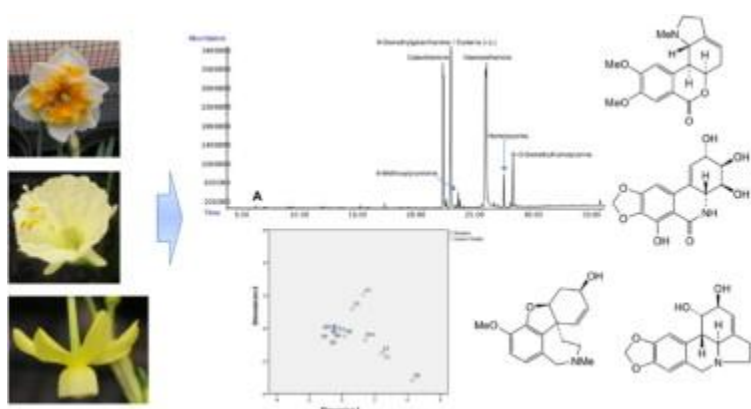
2. Distribution of nitrifiers and nitrification associated with different sizes of aggregates along a 2000 year chronosequence of rice cultivation Original Research Article  
*CATENA, Volume 119, August 2014, Pages 71-77*  
Xiaoping Xin, Qin Liu, Wei Liu, Xianjun Jiang, Alan L. Wright
3. Effects of biodegradable mulch on soil quality Original Research Article  
*Applied Soil Ecology, Volume 79, July 2014, Pages 59-69*  
C. Li, J. Moore-Kucera, J. Lee, A. Corbin, M. Brodhagen, C. Miles, D. Inglis
4. 2-Azahypoxanthine and imidazole-4-carboxamide produced by the fairy-ring-forming fungus increase wheat yield Original Research Article  
*Field Crops Research, Volume 162, June 2014, Pages 6-11*  
Hiroyuki Tobina, Jae-Hoon Choi, Tatsuo Asai, Yoshikazu Kiriwa, Tomohiro Asakawa, Toshiyuki Kan, Akio Morita, Hirokazu Kawagishi
5. Evaluation of root yield traits and glucosinolate concentration of different *Armoracia rusticana* accessions in Basilicata region (southern Italy) Original Research Article  
*Scientia Horticulturae, Volume 170, 7 May 2014, Pages 249-255*  
Rosa Agneta, Christian Möllers, Susanna De Maria, Anna Rita Rivelli

Graphical abstract



6. Cross-species application of sex linked markers in *H. salicifolia* and *H. tibetana* *Scientia Horticulturae*, Volume 170, 7 May 2014, Pages 281-283  
Aseem Chawla, Anil Kant, Tsering Stobdan, Ravi B. Srivastava, R.S. Chauhan
7. Allelopathic effect of fibre hemp (*Cannabis sativa* L.) on monocot and dicot plant species  
Original Research Article  
*Industrial Crops and Products*, Volume 56, May 2014, Pages 191-199  
Krzysztof Pudełko, Leszek Majchrzak, Dorota Narożna
8. Metabolomic analysis of bioactive Amaryllidaceae alkaloids of ornamental varieties of *Narcissus* by GC–MS combined with k-means cluster analysis Original Research Article  
*Industrial Crops and Products*, Volume 56, May 2014, Pages 211-222  
Laura Torras-Claveria, Strahil Berkov, Carles Codina, Francesc Viladomat, Jaume Bastida

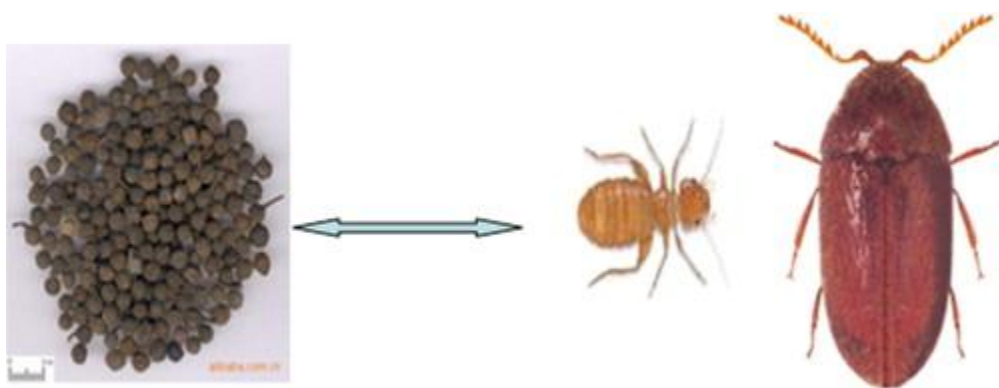
#### Graphical abstract



9. The essential oil of *Dodonaea viscosa* leaves is allelopathic to rosemary (*Rosmarinus officinalis* L.) Original Research Article  
*Industrial Crops and Products*, Volume 56, May 2014, Pages 241-245  
Vahid Rowshan, Farzaneh Farhadi, Sharareh Najafian

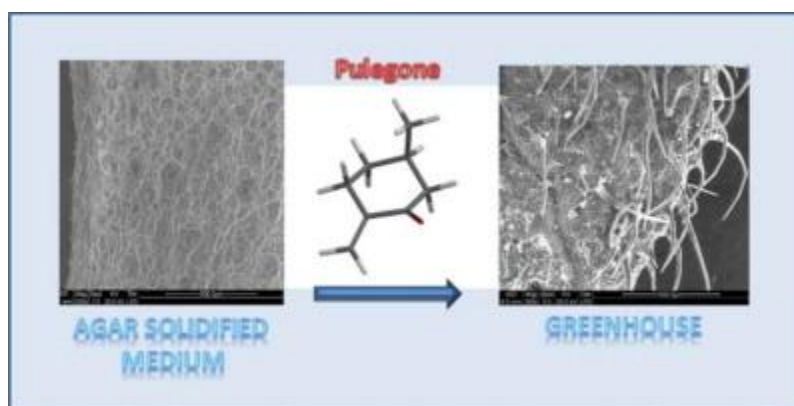
10. Bioactivity of essential oil of *Litsea cubeba* from China and its main compounds against two stored product insects Original Research Article  
*Journal of Asia-Pacific Entomology*, Available online 4 April 2014, Pages  
Kai Yang, Cheng Fang Wang, Chun Xue You, Zhu Feng Geng, Rui Qi Sun, Shan Shan Guo, Shu Shan Du, Zhi Long Liu, Zhi Wei Deng

Graphical abstract



11. Influence of *in vitro* growth conditions in the production of defence compounds in *Mentha pulegium* L.  
*Phytochemistry Letters*, Available online 4 April 2014, Pages  
Khadija H. Benlarbi, Nouriddine Elmtili, Francisco A. Macías, Juan Carlos G. Galindo

Graphical abstract



12. Modelling *ex-ante* the economic and environmental impacts of Genetically Modified Herbicide Tolerant maize cultivation in Europe Original Research Article  
*Agricultural Systems*, Available online 3 April 2014, Pages  
Pascal Tillie, Koen Dillen, Emilio Rodríguez-Cerezo

13. Dynamic modelling of mixotrophic microalgal photobioreactor systems with time-varying yield coefficient for the lipid consumption Original Research Article  
*Bioresource Technology*, Available online 31 March 2014, Pages  
Sung Jin Yoo, Jung Hun Kim, Jong Min Lee