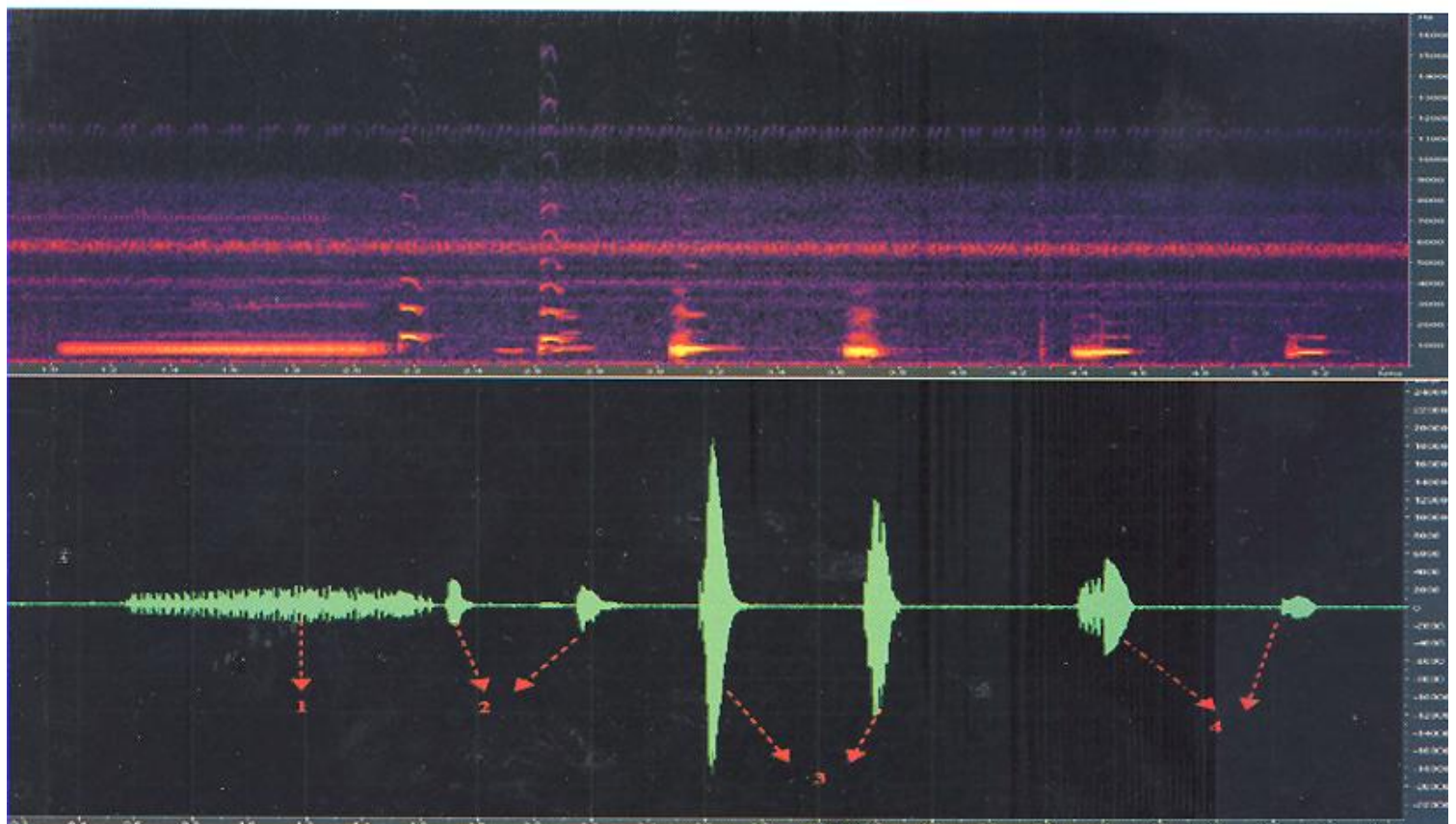


Berita Biologi

Jurnal Ilmu-ilmu Hayati



Diterbitkan oleh
Pusat Penelitian Biologi - LIPI

DAFTAR ISI

TINJAUAN ULANG (REVIEW)TINJAUAN TENTANG *Nepenthes* (NEPENTHACEAE) DI INDONESIA[A Review of *Nepenthes* (Nepenthaceae) in Indonesia]

Muhammad Mansur 1

MAKALAH HASIL RISET (ORIGINAL PAPERS)

CEMARAN BAKTERI PATOGENIK PADA SUSU SAPI SEGAR DAN RESISTENSINYA TERHADAP ANTIBIOTIKA

[Pathogenic bacteria contamination in fresh dairy milk and its resistance to antibiotic]

Anni Kusumaningsih dan Tati Ariyanti 9

SELEKSI DAN KARAKTERISASI MIKROBA LIGNOSELULOLITIK YANG DIISOLASI DARI LIMBAH SERBUK GERGAJI SEBAGAI MEDIA TANAM JAMUR TIRAM

(Pleurotus ostreatus)[Screening and Characterization of Lignoselulolytic Microbes Isolated from Saw Dust Waste as Growth Medium of Oyster Mushrooms (*Pleurotus ostreatus*)]

R Haryo Bimo Setiarto dan Iwan Saskiawan 19

KUALITAS UMBI BEBERAPA KLON KENTANG (*Solanum tuberosum* L.)

DATARAN MEDIUM UNTUK KERIPIK

[Tuber Quality of some Potato (*Solanum tuberosum* L.) Clones of Medium Altitude Area for Chips Making]

Ali Asgar 29

LIGHT INTENSITY AND THE SPREAD OF *Cestrum aurantiacum* Lindl.

IN A SECONDARY MOUNTAINOUS REMNANT FOREST

[Intensitas Cahaya dan Penyebaran *Cestrum aurantiacum* Lindl. di Hutan Remnan Sekunder]

Decky Indrawan Junaedi 39

KERAGAMAN SUARA KODOK PURU BESAR (*Phrynoidis aspera* (Gravenhorst, 1829))

ASAL JAWA BARAT

[Various calls type of Giant River Toad (*Phrynoidis asper* (Gravenhorst, 1829)) from West Java]

Hellen Kurniati 47

PERBAIKAN PADI (*Oryza sativa* L.) VARIETAS CIHERANG UNTUK SIFAT UMUR

GENJAH DAN PRODUKSI TINGGI MENGGUNAKAN MARKA MOLEKULER

[Improvement of Ciherang Rice (*Oryza sativa* L.) Variety for Early Maturity and High Production Trait Using Molecular Marker]

Joko Prasetyono, Tasliah, Ahmad Dadang dan Fatimah 61

UJI EFEKTIVITAS ANTIBAKTERI EKSTRAK ETANOL DAN EKSTRAK AIR

KELOPAK BUNGA ROSELLA (*Hibiscus sabdariffa* L.) TERHADAP BAKTERI*Streptococcus pneumoniae*[The Effectiveness Test of Antibactery of Rosella (*Hibiscus sabdariffa* L.) sheath Ethanol Extract and Water Extract Against *Streptococcus pneumoniae*]

Oom Komala, Reni Rosyanti dan Muztabadihardja 73

<p>INTERAKSI GALUR × LINGKUNGAN, POTENSI HASIL DAN STABILITAS HASIL GALUR HARAPAN KEDELAI {<i>Glycine max</i> (L.) Merr.} HITAM [Genotype × Environment Interactions, Yield Potential and Stability of Black Soybean {<i>Glycine max</i> (L.) Merr.} Promising Lines] <i>M Muchlish Adie, Ayda Krisnawati dan GWA Susanto</i></p>	79
<p>UPAYA MEMPEROLEH BIBIT SUWEG {<i>Amorphophallus paeoniifolius</i> (Dennst.) Nicolson} MELALUI STEK UMBI DAN STEK RACHIS YANG DIMANIPULASI DENGAN ZAT PENGATUR TUMBUH [Propagation of Suweg {<i>Amorphophallus paeoniifolius</i> (Dennst.) Nicolson} Using Tuber and Rachis Cutting Manipulated with Plant Growth Regulator] <i>Ria Cahyaningsih dan Hartutiningsih-M Siregar</i></p>	87
<p>KERAGAAN PEMIJAHAN ANTAR TIGA STOK UDANG HUNA MERAH (<i>Cherax quadricarinatus</i> von Martens) [Performance of Spawning among Three Stocks Freshwater Crayfish, Red Claw (<i>Cherax quadricarinatus</i> von Martens)] <i>Otong Zenal Arifin dan Titin Kurniasih</i></p>	97
<p>RESPON GENJER {<i>Limnocharis flava</i> (L.) Buchenau.} TERHADAP PEMUPUKAN DAN POTENSI GIZINYA UNTUK DIVERSIFIKASI KONSUMSI SAYURAN [Responses of Velvet Leaf {<i>Limnocharis flava</i> (L.) Buchenau.} to Fertilizer Treatments and Its Nutrition Potential for Vegetables Diversification] <i>Titi Juhaeti</i></p>	107
<p>HASIL DAN STABILITAS HASIL BIJI KEDELAI {<i>Glycine max</i> (L.) Merr.} GALUR HARAPAN DI LAHAN SAWAH [Yield and Yield Stability of Soybean {<i>Glycine max</i> (L.) Merr.} Promising Lines] <i>Ayda Krisnawati, M Muchlish Adie dan GWA Susanto</i></p>	117
<p>KEANEKARAGAMAN KOMUNITAS KRUSTASEA DI KEPULAUAN MATASIRI KALIMANTAN SELATAN [The Community Diversity of Crustacean in Matasiri Islands, South Kalimantan] <i>Rianta Pratiwi dan Nirmalasari Idha Wijaya</i></p>	127